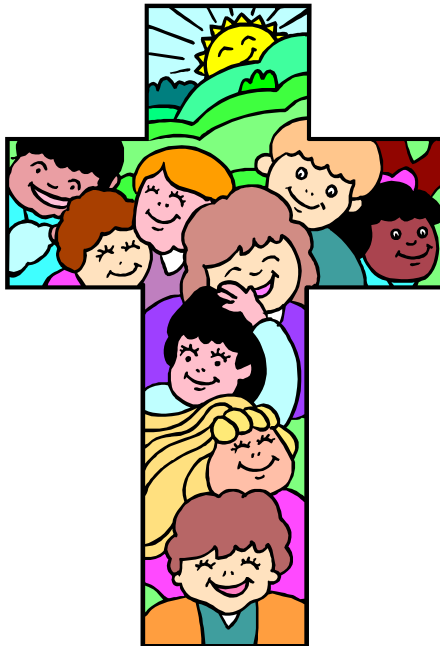


LICENSE

Our facility is licensed as a Type I facility with the Kentucky Cabinet for Health and Family Services. However, we are seeking quality standards beyond the state's minimum requirements in areas of staff to child ratios, program curriculum, staff education and training, and child safety for all of our children.



TEACHERS

Our teachers are well-trained and experienced. They must obtain fifteen hours of certified state Continuing Education credits each year. We are continually seeking the newest training and information in childcare! Additionally, there is always a staff member on site who is trained in CPR and first aid.

FERN CREEK BAPTIST CHURCH 2024-2025 Schedule of Services

SUNDAYS

- 9:30 a.m. Sunday School
 - 10:45 a.m. Morning Worship
 - 4:30 p.m. Deacons' Meeting (Monthly on 1st Sunday)
 - 5:00 p.m. Middle/High School Choir
 - 6:00 p.m. Discipleship Training (Adults)
- Brave Believers:
- Bible Bloomers - Ages 3-Kindergarten
 - Bible Buddies - Grades 1-5
 - Bible Beacons - Grades 6-12
- (This hour will sometimes be devoted to worship and other special services such as Advent services, Children's Music Week program, etc.)
- 7:00 p.m. Business Meeting (Quarterly on 2nd Sunday)

WEDNESDAYS

- 5:30 p.m. Dinner (TBA)
- 6:30 p.m. Prayer & Worship Service in the Sanctuary
 - L.I.G.H.T. for Youth
 - Children's Choirs
- 7:30 p.m. Adult Choir Rehearsal



Fern Creek Baptist Child Development Center 2024-2025



Preschool

Two-Year-Olds
Three-Year-Olds
Four-Year-Olds

5920 Bardstown Road
Louisville, KY 40291
(502) 239-8952
www.ferncreekbaptist.org

Linda Barnes Popham, Pastor
Terri Bosemer, Director

PRESCHOOL

Our Preschool program is offered five days a week by age group:

TWO-Year-Old Program & Tuition

| | | | |
|-----------------|--------------------|--------------------|-------------|
| Two Day Program | Tuesday & Thursday | 9:00 am to 3:00 pm | \$180/month |
|-----------------|--------------------|--------------------|-------------|

THREE-Year-Old Program & Tuition

| | | | |
|-----------------|--------------------|--------------------|-------------|
| Two Day Program | Tuesday & Thursday | 9:00 am to 3:00 pm | \$180/month |
|-----------------|--------------------|--------------------|-------------|

FOUR-Year-Old Program & Tuition

| | | | |
|-------------------|----------------------------|--------------------|-------------|
| Three Day Program | Monday, Wednesday & Friday | 9:00 am to 3:00 pm | \$270/month |
|-------------------|----------------------------|--------------------|-------------|

Children in these programs participate in many and varied hands-on activities. They also have opportunities for learning through music, recreation, special visitors, and weekly chapel services.

Three and Four-Year-Old Preschoolers must be completely potty-trained.

A sack lunch is needed for all programs.



SUMMER FUN

This Program is offered to two, three, and four-year-olds (must be two by August 1, 2024). The cost is a \$50 reservation fee and \$275 for the remainder.

“Summer Fun” is a wonderful way to keep your child in the routine of going to school. For the three-year-old children, this is a great introduction to fall preschool. It also helps beat those summer boredom blues. The schedule will be filled with many fun and enriching activities such as splash day, chapel, and crafts.



Fern Creek Baptist Child Development Center

CURRICULUM

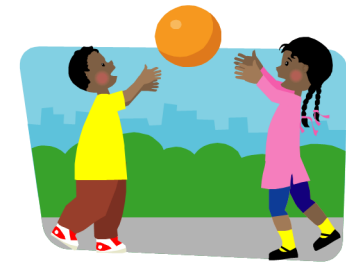
The curriculum is loosely based on *WEE Learn*, which is a developmentally appropriate weekday curricula for Christian settings designed for young children ages birth through Pre-K.

We include a monthly thematic model, combined with an increased academic focus, ideally building developmentally from one year to the next. A two-year-old will be ready for three-year-old preschool; a three-year-old will be ready for four-year-old preschool; and a four-year-old will be ready for kindergarten.

We set high standards for learning, behavior, and achievement.

BUT

**we also have
FUN!**



Preschool Enrollment

Fern Creek Baptist Child Development Center is open to all children regardless of race, creed, national origin, or religion, provided the student, in the opinion of the school, will benefit from the program and activities of the school.

Our center is a ministry extension of Fern Creek Baptist Church. We consider it an honor to partner with you in the care of your children. We take this task very seriously.

In order to have your child enroll in the 2024-2025 school term, the following are needed:

- 1. Enrollment Form**
- 2. Up-to-date Immunization Certificate**
- 3. Reservation Fee
\$100.00
(all programs / non-refundable)**
- 4. Supply Fee
\$30.00**

DATES/CALENDAR

Our school year programs begin the day after Labor Day and end in May. We follow the Jefferson County Public School Calendar, except that we close for Good Friday.

Children must attain enrollment age by August 1, 2024.